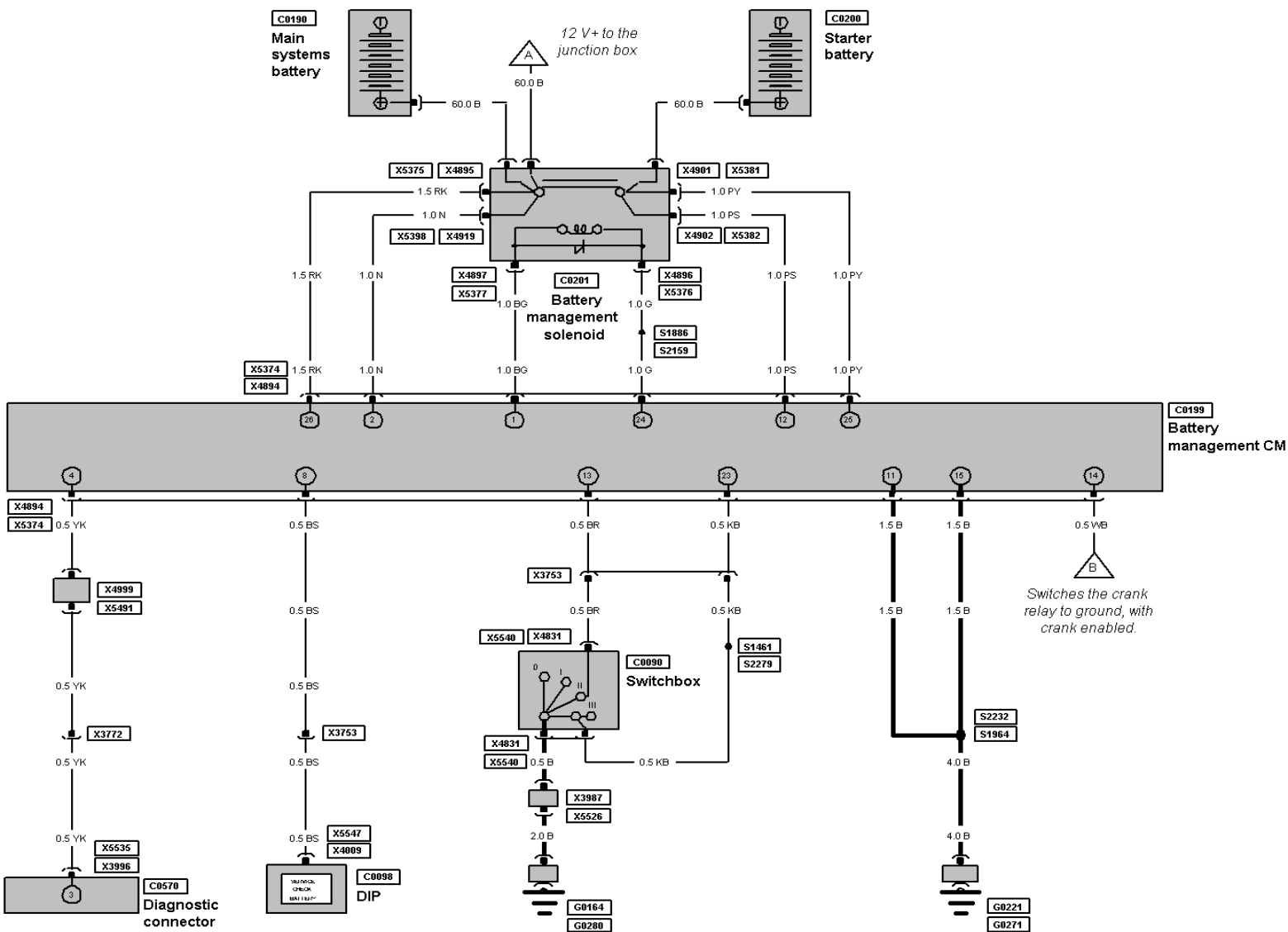


Electrical Circuit: 05 01 07: Power distribution

No	Description
C0001	Primary fusebox
C0003	Luggage compartment fusebox
C0004	Battery junction box
C0190	Main systems battery
C0199	Battery management control module
C0200	Starter battery
C0201	Battery management solenoid
C0765	Navigation accessories relay
C0852	Starter motor
C1030	Alternator
C1280	Fuse - 100 amp - rear main loom
G0140	Starter battery ground point
G0141	Main systems battery ground point
S1886	Splice - Green - rear main loom
S1970	Splice - Red - rear main loom
S1977	Splice - Red - rear main loom
S1985	Splice - Red - rear main loom
S2159	Splice - Green - rear main loom
S2239	Splice - Red - rear main loom
S2243	Splice - Red - rear main loom
X4380	Primary fusebox connector 2-way
X4894	Battery management control module connector 26-way
X4896	Battery management control switch connector 1-way
X4897	Battery management control switch connector 1-way
X4920	Main systems battery connector 1-way
X4922	Main systems battery connector 1-way
X4925	Luggage compartment fusebox connector 2-way
X5006	Navigation accessories relay connector 9-way
X5012	Right-hand front seat control module connector 4-way
X5044	Mega Fuse 1 connector
X5045	Mega Fuse 2 connector
X5374	Battery management control module connector 26-way
X5376	Battery management control switch connector 1-way
X5377	Battery management control switch connector 1-way
X5399	Main systems battery connector 1-way
X5401	Main systems battery connector 1-way
X5404	Luggage compartment fusebox connector 13-way
X5495	Mega Fuse 1 connector
X5496	Mega Fuse 2 connector
X5500	Navigation accessories relay connector 9-way
X5506	Right-hand front seat control module connector 4-way

Circuit Links

Description	Circuit	Additional Information
L		

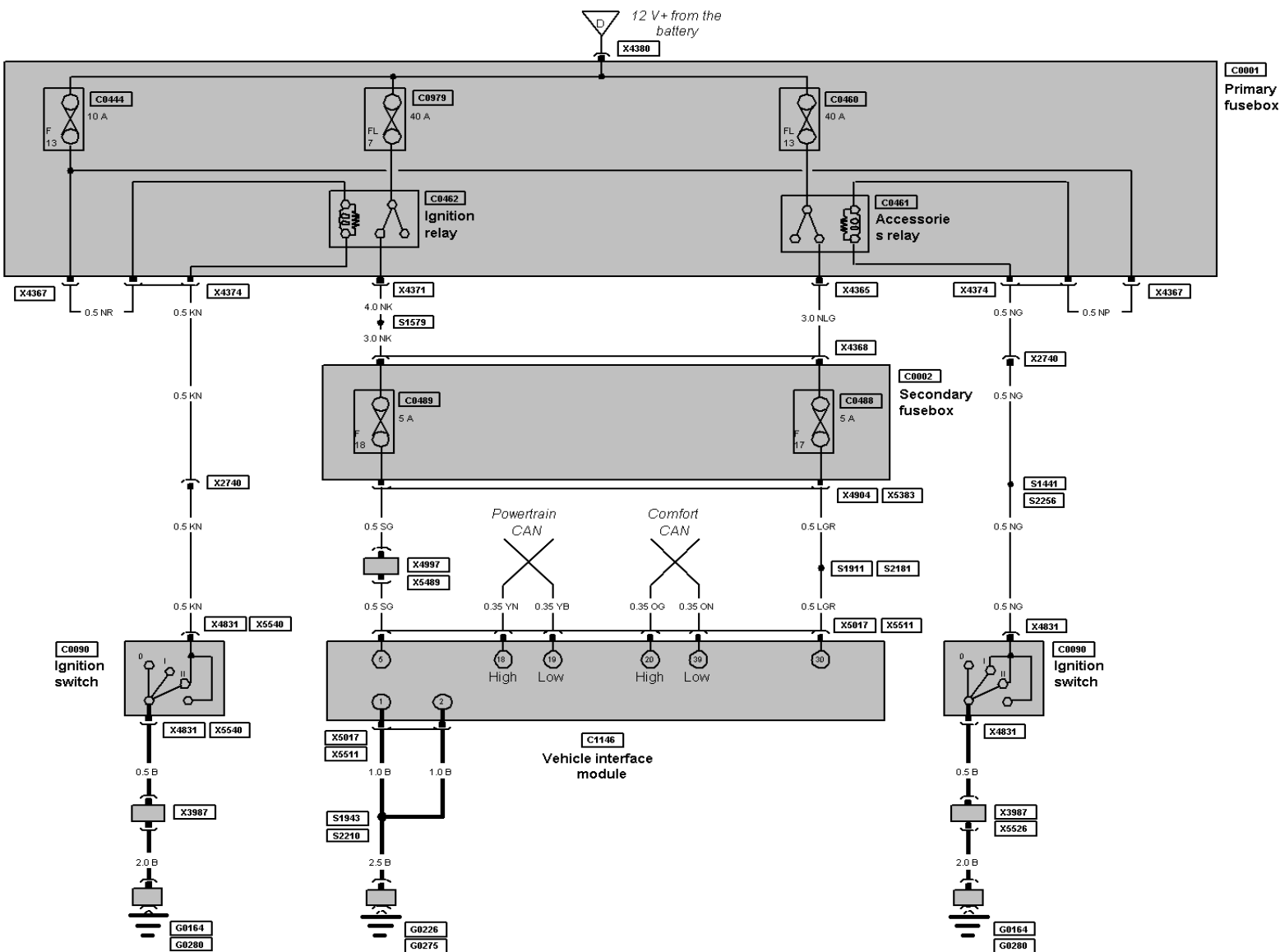


Electrical Circuit: 05 03 21: Battery management system (LHD)

No	Description
C0090	Ignition switch
C0098	Driver's information panel
C0190	Main systems battery
C0199	Battery management control module
C0200	Starter battery
C0201	Battery management solenoid
C0570	Diagnostic connector
G0164	Ground point header connector 6-way
G0221	Ground point connector
G0271	Ground point connector
G0280	Ground point connector
S1461	Splice - Pink/black - left-hand drive facia loom
S1886	Splice - Green - rear main loom
S1964	Splice - Black - rear main loom
S2159	Splice - Green - rear main loom
S2232	Splice - Black - rear main loom
S2279	Splice - Pink/black - left-hand drive facia loom
X3753	Rear main loom to left-hand drive facia loom plug and socket 18-way
X3772	Rear main loom to left-hand drive facia loom plug and socket 20-way
X3987	Header connector 20-way
X3996	Diagnostic connector 16-way
X4009	Driver's information panel connector 18-way
X4831	Switchbox connector 12-way
X4894	Battery management control module connector 26-way
X4895	Main battery power connector 1-way
X4896	Battery management control switch connector 1-way
X4897	Battery management control switch connector 1-way
X4901	Starter battery power connector 1-way
X4902	Starter battery sensor connector 1-way
X4919	Main battery sensor connector 1-way
X4999	Header connector 20-way
X5374	Battery management control module connector 26-way
X5375	Main battery power connector 1-way
X5376	Battery management control switch connector 1-way
X5377	Battery management control switch connector 1-way
X5381	Starter battery power connector 1-way
X5382	Starter battery sensor connector 1-way
X5398	Main battery sensor connector 1-way
X5491	Header connector 20-way
X5526	Header connector 20-way
X5535	Diagnostic connector 16-way
X5540	Switchbox connector 12-way
X5547	Driver's information panel connector 18-way

Circuit Links

Description	Circuit	Additional Information
-------------	---------	------------------------



Electrical Circuit: 05 04 05: Vehicle interface module power supply, grounds and CAN connections (LHD)

No	Description
C0001	Primary fusebox
C0002	Secondary fusebox
C0090	Ignition switch
C0444	Fuse F13, 10 amp - primary fusebox
C0460	Fuse FL13, 40 amp - primary fusebox
C0461	Accessories relay - primary fusebox
C0462	Ignition relay - primary fusebox
C0488	Fuse F17, 5 amp - secondary fusebox
C0489	Fuse F18, 5 amp - secondary fusebox
C0979	Fuse FL7, 40 amp - primary fusebox
C1146	Vehicle interface (Rear body) module
G0164	Ground point header connector 6-way
G0226	Ground point connector
G0275	Ground point connector
G0280	Ground point connector
S1441	Splice - Brown/green - left-hand drive facia loom
S1579	Splice - Brown/pink - front main loom
S1911	Splice - Light green/red - rear main loom
S1943	Splice - Black - rear main loom
S2181	Splice - Light green/red - rear main loom
S2210	Splice - White/yellow - rear main loom
S2256	Splice - Brown/green - left-hand drive facia loom
X2740	Front main loom to left-hand drive facia loom plug and socket 23-way
X3987	Header connector 20-way
X4365	Primary fusebox connector 3-way
X4367	Primary fusebox connector 12-way
X4368	Secondary fusebox connector 4-way
X4371	Primary fusebox connector 3-way
X4374	Primary fusebox connector 18-way
X4380	Primary fusebox connector 2-way
X4831	Switchbox connector 12-way
X4904	Secondary fusebox connector 9-way
X4997	Header connector 20-way
X5017	Vehicle interface module connector 81-way
X5383	Secondary fusebox connector 9-way
X5489	Header connector 20-way
X5511	Vehicle interface module connector 81-way
X5526	Header connector 20-way
X5540	Switchbox connector 12-way

Circuit Links

Description	Circuit	Additional Information
D	050107	12 V+ from the battery